

As **government employees**, you keep our community in good working order on a daily basis. As you maintain the services that are integral to the vitality of our community, please follow these guidelines to prevent stormwater pollution, protect the quality of our environment and preserve our water resources.

Everything that goes into a storm drain goes untreated into local creeks, ponds, lakes and waterways and pollutes our waters. These waterways ultimately drain to the aquifer from which we draw our drinking water. This is one reason, among many, why we only want rain water to enter storm drains.

What Causes Stormwater Pollution?

- Cleaners and solvents
- Wash water (car, mop, carpet)
- Landscaping debris and chemicals
- Oils and greases
- Paints
- Wastewater and pet waste
- Swimming pool discharge
- Litter

Polluted Stormwater...

- Harms the freshwater habitat.
- Reduces our quality of life.
- Clogs stormdrains and causes neighborhood flood conditions.
- Costs taxpayers money.
- Can pollute our drinking water.



Thank you for your continued use of good housekeeping practices! We appreciate your diligence in following routine maintenance procedures.

Don't allow spills, leaks, wastes, or washwater from vehicles or equipment to enter the storm drain.

If you see a clogged stormwater inlet, a spill or illegally discarded waste in the City/County, call the Stormwater Hotline to at **352-264-6800**. There are inspectors ready to respond!



[Learn More](#)

Help Prevent
Stormwater Pollution

Employee Guide

Stormwater Pollution Solutions

Reuse and Recycle

- Follow City/County recycling and waste reduction guidelines.

Dispose With Care

- Keep waste out of storm drains.
- Keep dumpster lids closed.
- Sweep dumpster areas with a broom—not water.
- Keep liquid waste out of dumpsters.
- If your dumpster leaks, request a new one.
- Call the Stormwater Hotline—**352-264-6800** for information on how to safely dispose of anything dangerous.



Spill Prevention and Clean Up

- Have spill prevention plans for applicable work activities.
- Sweep and dry mop frequently to reduce the amount of dirt, fluids, and other residue that accumulates where you work.
- Clean up spills promptly.
- Clean up without water.
- Keep spill kits on hand to help clean up spills.

Inventory

- Maintain an organized inventory of materials to know what you have.

Maintain Equipment

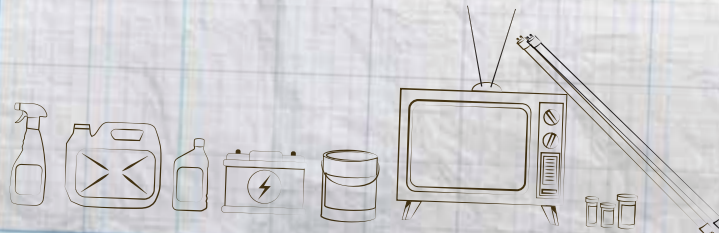
- Keep your work area clean.
- Inspect for leaks, malfunctions, and staining on or around vehicles and equipment. If you find any problems, report them to Fleet Management immediately.

Washing Areas

- Avoid washing parts or equipment outside.
- Wash equipment or vehicles in designated areas where sumps or drains collect wash water or release to the sanitary sewer system.
- Don't let wash water flow into the gutter or storm drain.
- Use barriers or absorbent pads to prevent dirty, polluted wash water from entering a storm drain inlet.

Handle and Store Materials Safely

- Read and follow handling instructions for all the materials you store.
- Make sure storage containers are spill-proof. Check for leaks and perform routine maintenance.
- Use safeguards (such as berms or secondary containment basins) against accidental releases of liquids from the storage area.
- Protect stored materials from rainwater.
- Store hazardous materials according to federal, state and local requirements.



Prevent Pollution During Construction and Maintenance Activities

- Sediments, concrete wastes and other pollutants must be retained on-site and disposed of properly. Do not wash anything into streets, gutters, or storm drains.
- Toxic materials must be stored properly and may not contaminate either the soil or surface waters.
- Contain waste.
- Minimize and stabilize disturbed areas.
- Protect slopes and channels.
- Control erosion on site.

Municipal Maintenance

- Avoid using detergents in steam and pressure washing.
- Minimize or avoid use of fertilizer, herbicides and/or pesticides for landscaping and avoid during rainy weather.
- Do not overwater.
- Mulch, compost or recycle lawn clippings, trimmings from trees and other landscaping—do not blow them into the roadway, ditch, creek or storm drain.
- If you see anyone blowing or discarding of yard waste or chemicals in storm drains, please call the Stormwater Hotline at **352-264-6800**.